



**Unical**

X

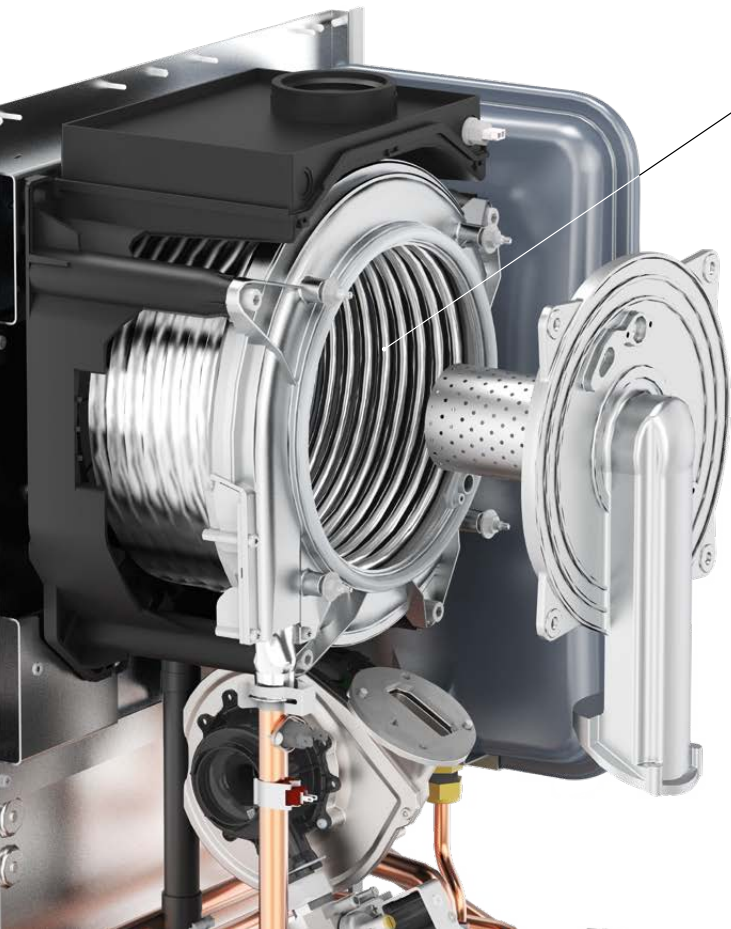


**X as INOX**, as the exchanger that constitutes the engine of this wall hung condensing boiler.

X is available in combi instantaneous version (up to 18,2 l/min), it works both with natural gas and LPG (conversion kit supplied with).

Characteristics:

- **Low NOx Premix burner (class 6)**
- **IPX5D (also for outdoor installation)**
- **Compact size and compatible with other Unical models**  
(ideal for replacements)
- **Standardized template and connections** (Unical KON<sup>m</sup> / KON<sup>e</sup>)
- **Adjustment of minimum output** when in heating mode
- Electronic antifreeze function for **operation up to -15**
- **Management of 2 heating zone** at different temperatures (high/low)
- **Electronics with HWS “Hot Water Speed” function** in order to reduce any possible delay during the production of DHW, and **automatic air vent function**
- Designed with ample space for **easy maintenance**
- **Wide range of choice of accessories** including:
  - both, modulating and on/off **control thermostats**
  - **outer temperature sensor** for managing both the boiler and one or two high/low temperature zones



## STAINLESS STEEL HEAT EXCHANGER

- MONOSPIRAL OVAL SECTION
- NO WELDING
- GREATER COMBUSTION CHAMBER VOLUME
- REDUCED EMISSIONS / BETTER EFFICIENCY
- SMALLER PRESSURE LOSSES
- DEPOSITS REDUCTION
- MORE SILENT
- LONGER DURATION
- FRONT ACCESS FOR EASY MAINTENANCE

**Stainless steel exchanger/condenser**

**10 litres expansion vessel**

**Low NOx premix modulating burner**



**D.H.W. heat exchanger**

stainless steel with  
braze-welded plates.

New asymmetric  
technology:

- size reduction
- better efficiency

**High efficiency modulating pump**

**Panel board**

equipped with display, function selector,  
temperature adjustment potentiometer  
and reset button



# EXT version for outdoor installation

The X boiler is standard IPX5D, with a high degree of protection as required by the regulations. For that reason with the addition of the protection top (optional), it can be outdoor installed with 60/100 coaxial exhaust system.

The following accessories complete the outdoor installation equipment:

- **Anti-freeze heater kit for condensate siphon and pipes**
- **Connections cover kit**



# Accessories (optional)



**EASY** is a wireless modulating weekly thermostat:

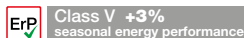
- with data transmission range of approximately 30 meters
- **wireless**, for weekly/daily remote programming, via App "Total Connect Comfort Europe", from Smartphone/Tablet



A wide range of accessories to complete the system (hydraulic connections, flue ducts, etc.) is available at [www.unical.eu](http://www.unical.eu).



**RCh**  
Weekly thermostat with Open Therm Protocol  
**GWAY modulo WI-FI**  
(in combination with RCh) for remote control of the thermostat; via App on smartphones and tablets



**SIM-CRONO P**  
Backlit weekly modulating remote control with Open Therm Protocol





**REGOLAFACILE ON-OFF**  
Weekly digital chronothermostat ON /OFF



**OUTER TEMPERATURE SENSOR**



**MODULO OT**  
For multi-zone heating system management

Technical data according to ErP directive		C 24	C 32
Nominal output heating / D.H.W.	kW	24 / 28	32 / 32
Nominal heat output	kW	5.3 ÷ 25.2	5.4 ÷ 33.6
Seasonal space heating energy efficiency	ηs %	93	93
<b>Seasonal EFFICIENCY CLASS in heating mode</b>		<b>A</b>	<b>A</b>
Useful heat output in high-temp. regime (Tr 60°C / tm 80°C)	P4 kW	23.4	31.2
Useful efficiency at nom. heat output in high-temp. regime (Tr 60°C/ Tm 80°C)	η4 %	87.8	87.7
Useful heat output at 30% of nom. heat output in low-temp. regime (Tr 30 °C)	P1 kW	7.8	10.4
Useful efficiency at 30% of nom. heat output in low-temp. regime (Tr 30 °C)	η1 %	97.9	97.8
Emissions of nitrogen oxides (NOx)	NO <sub>x</sub> mg/kWh	45	49
NO <sub>x</sub> Class		6	6
Annual electricity consumption	QHE GJ	73	97
Declared load profile		XL	XL
Energy efficiency in D.H.W. produc. mode	ηWH %	87	89
Daily fuel consumption	Q <sub>fuel</sub> kWh	22.45	21.9
<b>Seasonal EFFICIENCY CLASS in D.H.W. production mode</b>		<b>A</b>	<b>A</b>
Production of D.H.W. in cont. operation with Δt 25 K (mixed)	l/min	16.2	18.2
Expansion vessel total capacity	l	10	10
Maximum production of condensate	kg/h	3.9	5.2
Heating circuit pressure. (min./max.)	bar	0.5 / 3.0	0.5 / 3.0
D.H.W. circuit pressure (min./max.)	bar	0.5 / 6.0	0.5 / 6.0
Sound pressure level LpA at nominal output (*)	dB(A)	43	46
Protection degree	IP	X5D	X5D
Net weight	kg	40	41

(\*) measured in free field at 1 m distance from the appliance Pending approval for Ø 50 mm split exhaust system



find out more



- The X product complies with:
- Regulation 426/2016 (GAR) - CE marking
  - Directive 2014/30 / EU (electromagnetic compatibility)
  - Directive 2014/35 / EU (low voltage)

Unical



[www.unical.eu](http://www.unical.eu)